



氣象廳

Korea Meteorological  
Administration

# MONTHLY CLIMATE REVIEW OVER KOREA (total 7 pages)

Division	National Climate Data Center
Contact	LEE, Jae-Won
Phone/email	+82-2-2181-0891/ hyunmj@korea.kr
Release	June 01, 2016

## May and Spring(March-May) 2016 Climate Summary

- ◇ The nationwide mean temperature (18.6°C) in May 2016 was 1.4°C above normal and the nationwide-average of precipitation (98.4 mm) was 95.7% of normal.
- ◇ The nationwide mean temperature (13.2°C) in spring 2016 was 1.5°C above normal and the nationwide-average of precipitation (312.8 mm) was 131.0% of normal.

- Climate features and long-term trends in May and spring 2016 were analyzed 45 meteorological stations throughout Korea (national average) during 1973-2016 (1908-2016 for Seoul).

※ Normal: Average value of climatic element data collected from 1981 to 2010

### □ The climatic characteristics in May 2016

#### o Korea (as a whole),

- The mean temperature (18.6°C), the mean maximum temperature (25.1°C) and the mean minimum temperature (12.4°C) were 1.4°C, 1.8°C, 0.9°C above normal, respectively.
- A nationally-averaged precipitation was 98.4 mm, which was 95.7% of normal. The number of rainy days was 8.7, which was 0.1 days more than normal.
- The total number of hours of sunshine was 269.4, which was 121.4% of normal.

#### o Seoul,

- The mean temperature (19.6°C), the mean maximum temperature (25.7°C) and the mean minimum temperature (14.1°C) were 1.8°C, 2.7°C, 0.9°C above normal, respectively.
- The amount of precipitation was 160.5 mm, which was 151.6% of normal.
- The number of rainy days was 9.0, which was same the normal.
- The total number of hours of sunshine was 280.1, which was 131.5% of normal.

## □ Long-term<sup>1)</sup> trend in May 2016 climate

### o Korea (as a whole),

- The national mean temperatures in May during the 2000s (2001-2010) was 0.7°C above that of in the 1970s (1973-1980).
- The nationwide-average of precipitation in May during the 2000s was 9.2 mm more than that of in the 1970s.
- The number of rainy days in May during the 2000s was 0.9 days more than that of in the 1970s.
- The total sunshine hours in May during the 2000s was 34.3 hours less than that of in the 1970s.

### o Seoul,

- The mean temperatures in May during the 2000s (2001-2010) was 1.4°C above that of in the 1970s (1971-1980).
- The precipitation in May during the 2000s was 10.9 mm more than that of in the 1970s.
- The number of rainy days in May during the 2000s was 0.7 days more than that of in the 1970s.
- The total sunshine hours in May during the 2000s was 33.8 hours less than that of in the 1970s.

## □ The climatic characteristics in Spring 2016

### o Korea (as a whole),

- The mean temperature (13.2°C), the mean maximum temperature (19.5°C) and the mean minimum temperature (7.4°C) were 1.5°C, 1.6°C, 1.4°C above normal, respectively.
- A nationally-averaged precipitation was 312.8 mm, which was 131.0% of normal. The number of rainy days was 25.0, which was 0.5 days more than normal.
- The total number of hours of sunshine was 686.0, which was 109.0% of normal.

---

1) 2000s : 2001~2010 / 1970s of Korea(Seoul) : 1973~1980(1971~1980)

o Seoul,

- The mean temperature (13.6°C), the mean maximum temperature (19.5°C) and the mean minimum temperature (8.5°C) were 1.6°C, 2.4°C, 1.0°C above normal, respectively.
- The amount of precipitation was 277.8 mm, which was 127.7% of normal.
- The number of rainy days was 24.0, which was 0.3 days less than normal.
- The total number of hours of sunshine was 753.3, which was 124.1% of normal.

□ **Long-term<sup>2)</sup> trend in Spring 2016 climate**

o Korea (as a whole),

- The national mean temperatures in spring during the 2000s (2001-2010) was 0.7°C above that of in the 1970s (1973-1980).
- The nationwide-average of precipitation in spring during the 2000s was 35.9 mm less than that of in the 1970s.
- The number of rainy days in spring during the 2000s was 0.9 days more than that of in the 1970s.
- The total sunshine hours in spring during the 2000s was 57.1 hours less than that of in the 1970s.

o Seoul,

- The mean temperatures in spring during the 2000s (2001-2010) was 1.2°C above that of in the 1970s (1971-1980).
- The precipitation in spring during the 2000s was 22.5 mm more than that of in the 1970s.
- The number of rainy days in spring during the 2000s was 2.0 days more than that of in the 1970s.
- The total sunshine hours in spring during the 2000s was 76.2 hours less than that of in the 1970s.

---

2) 2000s : 2001~2010 / 1970s of Korea(Seoul) : 1973~1980(1971~1980)

## Appendix 1 Climate features of May 2016 (Nationwide)

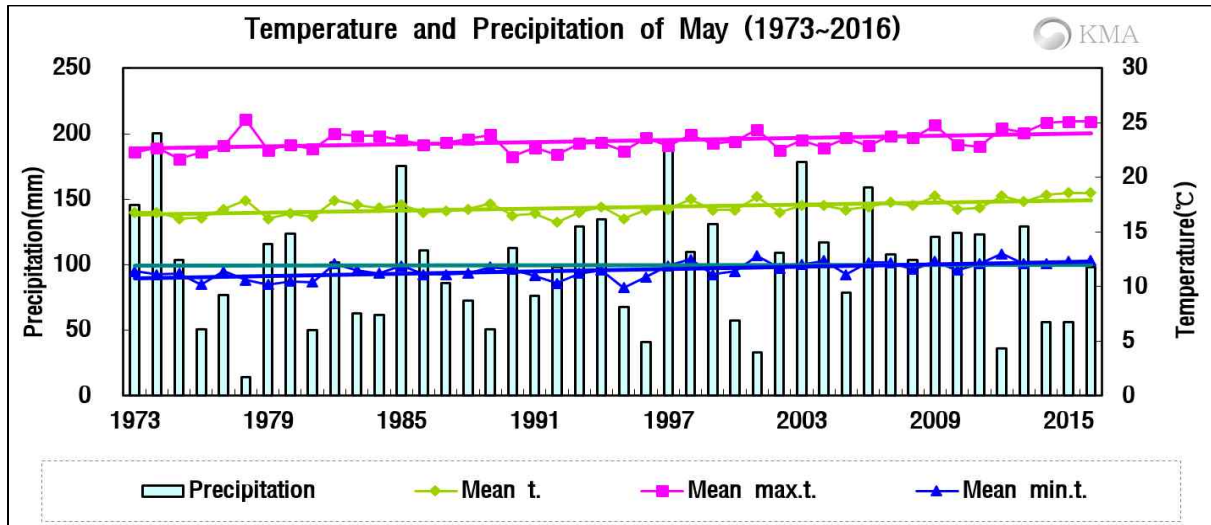


Fig 1. Temperatures (mean, mean maximum and mean minimum) and precipitation in South Korea during May (1973–2016).

### The nationwide average value of meteorological element during May (1973–2016)

Elements (whole country)	May 2016(a)	May 2015(b)	Normals of May (1981-2010)(c)	a-b	a-c	Rank since 1973 (within 5th)
Mean temperature (°C)	18.6	18.6	17.2	0.0	1.4	the highest
Mean maximum temp. (°C)	25.1	25.1	23.3	0.0	1.8	the 2nd highest
Mean minimum temp. (°C)	12.4	12.3	11.5	0.1	0.9	the 4th highest
Precipitation (mm)	98.4	56.5	101.7	41.9 (263.5%)	-3.3 (95.7%)	
Days of rain (day)	8.7	6.6	8.6	2.1	0.1	
Sunshine duration (hour)	269.4	284.7	221.9	-15.3 (94.6%)	47.5 (121.4%)	the 4th highest
Mean cloud amount (1/10)	4.8	4.3	5.1	0.5	-0.3	
Days of maximum temperature more than 30°C(day)	2.2	3.5	1.1	-1.3	1.1	
Asian dust days (day)	1.5	0.0	1.1	1.5	0.4	

### The nationwide average value of meteorological element during May in each decade (1973–2010)

Year	Mean temp. (°C)	Mean max. temp. (°C)	Mean min. temp. (°C)	Prep. (mm)	Days of rain (day)	Sunshine duration (hour)	Mean cloud amount (1/10)	Days of maximum temperature more than 30°C(day)	Asian dust days (day)
1973-1980(a)	16.8	22.8	10.8	104.0	8.2	243.0	5.0	1.3	0.9
1981-1990(b)	17.2	23.3	11.4	88.5	8.0	232.8	5.4	1.0	1.2
1991-2000(c)	16.9	23.0	11.2	103.4	8.8	224.3	4.9	1.0	1.1
2001-2010(d)	17.5	23.5	12.0	113.2	9.1	208.7	5.1	1.2	1.0
2016(e)	18.6	25.1	12.4	98.4	8.7	269.4	4.8	2.2	1.5
d-a	0.7	0.7	1.2	9.2	0.9	-34.3	0.1	-0.1	0.1
d-b	0.3	0.2	0.6	24.7	1.1	-24.1	-0.3	0.2	-0.2
d-c	0.6	0.5	0.8	9.8	0.3	-15.6	0.2	0.2	-0.1
e-d	1.1	1.6	0.4	-14.8	-0.4	60.7	-0.3	1.0	0.5

## Appendix 2 Climate features of May 2016 (Seoul)

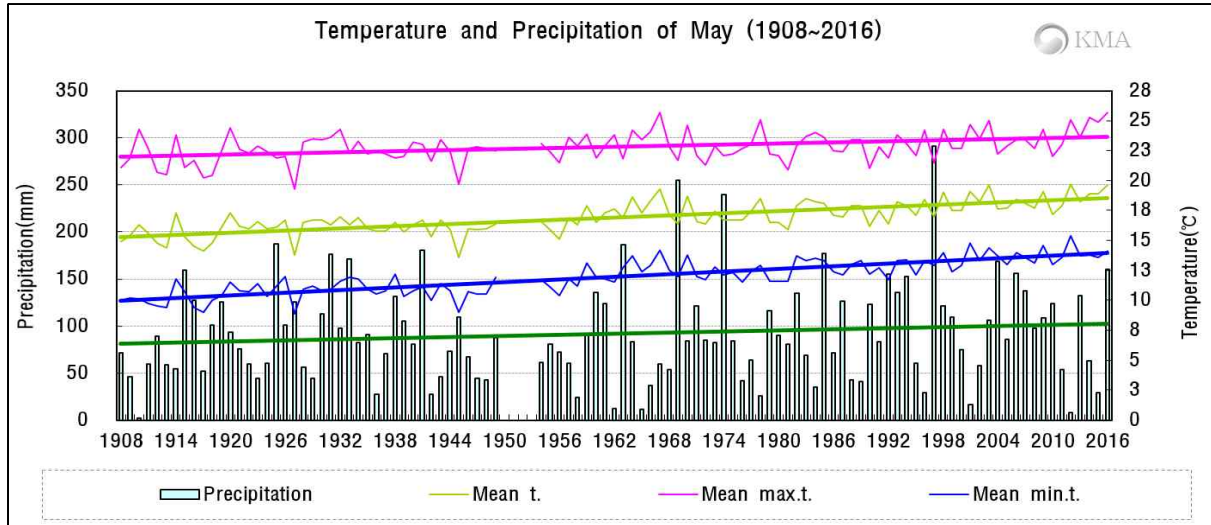


Fig 2. Temperatures (mean, mean maximum and mean minimum) and precipitation in Seoul during May (1908–2016).

### The average value of meteorological element during May in Seoul(1908–2016)

Elements (Seoul)	May 2016(a)	May 2015(b)	Normals of May (1981-2010)(c)	a-b	a-c	Rank since 1908 (within 5th)
Mean temperature (°C)	19.6	18.9	17.8	0.7	1.8	the 2nd highest
Mean maximum temp. (°C)	25.7	24.9	23.0	0.8	2.7	the highest
Mean minimum temp. (°C)	14.1	13.6	13.2	0.5	0.9	
Precipitation (mm)	160.5	28.9	105.9	131.6 (555.4%)	54.6 (151.6%)	
Days of rain (day)	9.0	6.0	9.0	3.0	0.0	
Sunshine duration (hour)	280.1	290.4	213.0	-10.3 (96.5%)	67.1 (131.5%)	
Mean cloud amount (1/10)	4.6	4.1	5.2	0.5	-0.6	
Days of maximum temperature more than 30°C(day)	4.0	4.0	0.5	0.0	3.5	the highest
Asian dust days (day)	1.0	0.0	1.4	1.0	-0.4	

### The average value of meteorological element during May in Seoul in each decade (1911–2010)

Year	Mean temp. (°C)	Mean max. temp. (°C)	Mean min. temp. (°C)	Prep. (mm)	Days of rain (day)	Sunshine duration (hour)	Mean cloud amount (1/10)	Days of maximum temperature more than 30°C(day)	Asian dust days (day)
1911-1920(a)	15.4	21.8	10.1	92.0	9.4	248.1	5.9	0.2	0.2
1921-1930	16.1	22.4	10.8	86.8	11.0	235.5	6.3	0.1	0.1
1931-1940(b)	16.3	22.8	11.2	103.3	9.7	264.7	5.7	0.7	0.0
1941-1949	15.8	22.3	10.7	75.4	8.6	261.7	6.2	0.3	0.0
1954-1960	16.5	22.8	11.6	75.1	8.4	239.2	5.7	0.1	0.4
1961-1970	17.8	23.5	12.8	90.7	7.3	226.5	5.6	0.6	0.6
1971-1980(c)	16.9	22.6	12.1	95.0	8.1	227.8	4.9	0.5	0.6
1981-1990	17.5	22.8	12.8	90.2	9.3	226.9	5.6	0.1	1.6
1991-2000	17.7	22.9	12.9	121.4	9.0	218.1	5.0	0.7	1.4
2001-2010(d)	18.3	23.4	13.8	105.9	8.8	194.0	4.9	0.7	1.3
2016(e)	19.6	25.7	14.1	160.5	9.0	280.1	4.6	4.0	1.0
d-a	2.9	1.6	3.7	13.9	-0.6	-54.1	-1.0	0.5	1.1
d-b	2.0	0.6	2.6	2.6	-0.9	-70.7	-0.8	0.0	1.3
d-c	1.4	0.8	1.7	10.9	0.7	-33.8	0.0	0.2	0.7
e-d	1.3	2.3	0.3	54.6	0.2	86.1	-0.3	3.3	-0.3

## Appendix 3 Climate features of Spring 2016 (Nationwide)

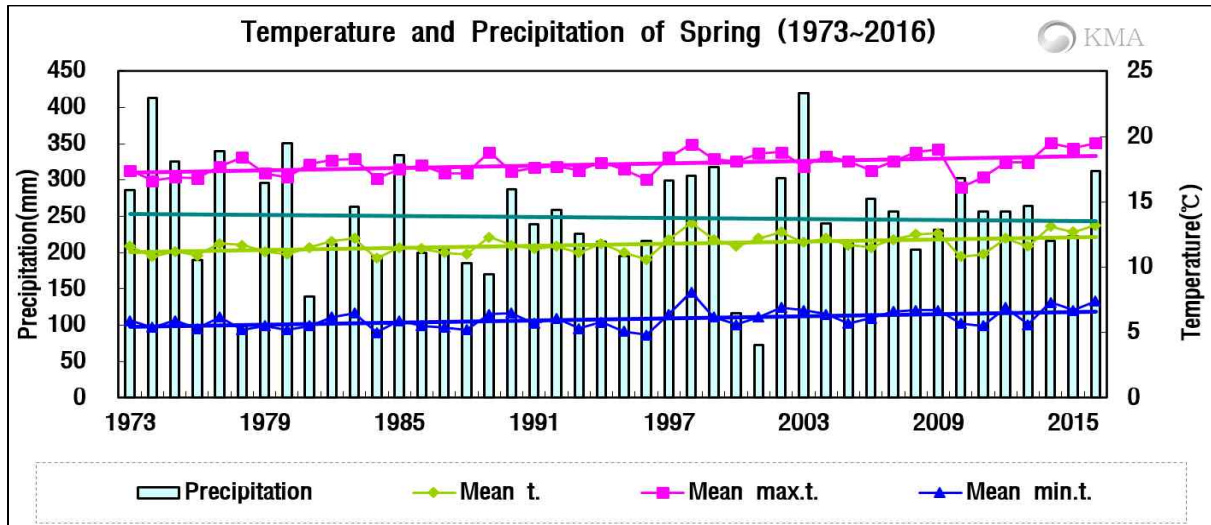


Fig 1. Temperatures (mean, mean maximum and mean minimum) and precipitation in South Korea during Spring (1973–2016).

### □ The nationwide average value of meteorological element during Spring (1973–2016)

Elements (whole country)	Spring 2016(a)	Spring 2015(b)	Normals of Spring (1981-2010)(c)	a-b	a-c	Rank since 1973 (within 5th)
Mean temperature (°C)	13.2	12.7	11.7	0.5	1.5	the 2nd highest
Mean maximum temp. (°C)	19.5	19.1	17.9	0.4	1.6	the highest
Mean minimum temp. (°C)	7.4	6.7	6.0	0.7	1.4	the 2nd highest
Precipitation (mm)	312.8	223.1	236.6	89.7 (160.6%)	76.2 (131.0%)	
Days of rain (day)	25.0	25.9	24.5	-0.9	0.5	
Sunshine duration (hour)	686.0	708.0	629.5	-22.0 (96.9%)	56.5 (109.0%)	
Mean cloud amount (1/10)	4.8	4.3	4.9	0.5	-0.1	
Days of maximum temperature more than 30°C(day)	2.2	3.6	1.1	-1.4	1.1	
Asian dust days (day)	5.4	6.0	5.4	-0.6	0.0	

### □ The nationwide average value of meteorological element during Spring in each decade (1973–2010)

Year	Mean temp. (°C)	Mean max. temp. (°C)	Mean min. temp. (°C)	Prep. (mm)	Days of rain (day)	Sunshine duration (hour)	Mean cloud amount (1/10)	Days of maximum temperature more than 30°C(day)	Asian dust days (day)
1973-1980(a)	11.3	17.3	5.6	287.5	24.6	659.7	5.0	1.3	3.0
1981-1990(b)	11.5	17.7	5.8	219.2	24.2	655.0	5.1	1.0	3.1
1991-2000(c)	11.7	17.9	5.9	239.0	23.9	631.0	4.7	1.1	5.3
2001-2010(d)	12.0	18.1	6.4	251.6	25.5	602.6	4.8	1.3	7.6
2016(e)	13.2	19.5	7.4	312.8	25.0	686.0	4.8	2.2	5.4
d-a	0.7	0.8	0.8	-35.9	0.9	-57.1	-0.2	0.0	4.6
d-b	0.5	0.4	0.6	32.4	1.3	-52.4	-0.3	0.3	4.5
d-c	0.3	0.2	0.5	12.6	1.6	-28.4	0.1	0.2	2.3
e-d	1.2	1.4	1.0	61.2	-0.5	83.4	0.0	0.9	-2.2

## Appendix 4 Climate features of Spring 2016 (Seoul)

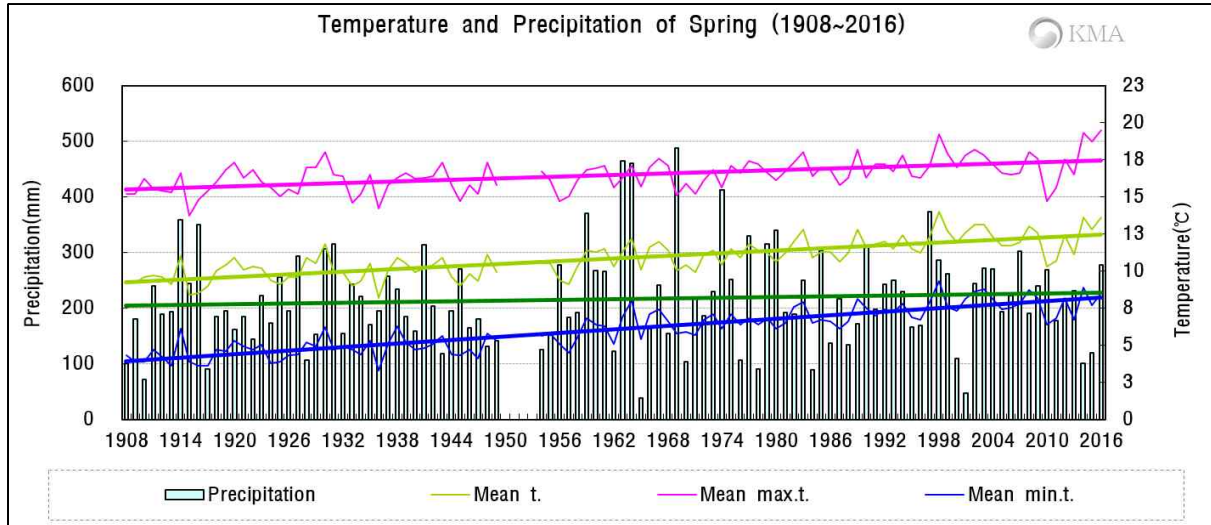


Fig 2. Temperatures (mean, mean maximum and mean minimum) and precipitation in Seoul during Spring (1908–2016).

### □ The average value of meteorological element during Spring in Seoul(1908–2016)

Elements (Seoul)	Spring 2016(a)	Spring 2015(b)	Normals of Spring (1981-2010)(c)	a-b	a-c	Rank since 1908 (within 5th)
Mean temperature (°C)	13.6	12.8	12.0	0.8	1.6	the 2nd highest
Mean maximum temp. (°C)	19.5	18.7	17.1	0.8	2.4	the highest
Mean minimum temp. (°C)	8.5	7.7	7.5	0.8	1.0	
Precipitation (mm)	277.8	119.0	217.5	158.8 (233.4%)	60.3 (127.7%)	
Days of rain (day)	24.0	21.0	24.3	3.0	-0.3	
Sunshine duration (hour)	753.3	777.2	607.0	-23.9 (96.9%)	146.3 (124.1%)	
Mean cloud amount (1/10)	4.3	4.0	4.8	0.3	-0.5	
Days of maximum temperature more than 30°C(day)	4.0	4.0	0.5	0.0	3.5	
Asian dust days (day)	7.0	10.0	6.6	-3.0	0.4	

### □ The average value of meteorological element during Spring in Seoul in each decade (1911–2010)

Year	Mean temp. (°C)	Mean max. temp. (°C)	Mean min. temp. (°C)	Prep. (mm)	Days of rain (day)	Sunshine duration (hour)	Mean cloud amount (1/10)	Days of maximum temperature more than 30°C(day)	Asian dust days (day)
1911-1920(a)	9.7	15.7	4.4	220.8	26.7	696.5	5.6	0.2	1.7
1921-1930	10.2	16.2	4.7	203.5	26.1	673.3	5.6	0.1	0.3
1931-1940(b)	9.8	15.8	4.9	213.4	26.0	705.3	5.4	0.7	0.0
1941-1949	10.0	16.1	4.9	190.8	25.1	722.4	5.5	0.3	0.0
1954-1960	10.4	16.0	5.7	223.9	25.9	636.6	5.4	0.1	1.3
1961-1970	11.1	16.5	6.5	250.4	23.2	631.8	5.4	0.6	1.9
1971-1980(c)	11.0	16.5	6.5	247.5	23.5	619.4	5.0	0.5	2.5
1981-1990	11.6	16.9	7.0	199.1	23.8	657.8	5.1	0.1	3.9
1991-2000	12.1	17.3	7.5	228.5	23.6	620.1	4.6	0.7	6.8
2001-2010(d)	12.2	17.1	8.0	225.0	25.5	543.2	4.7	0.7	9.2
2016(e)	13.6	19.5	8.5	277.8	24.0	753.3	4.3	4.0	7.0
d-a	2.5	1.4	3.6	4.2	-1.2	-153.3	-0.9	0.5	7.5
d-b	2.4	1.3	3.1	11.6	-0.5	-162.1	-0.7	0.0	9.2
d-c	1.2	0.6	1.5	-22.5	2.0	-76.2	-0.3	0.2	6.7
e-d	1.4	2.4	0.5	52.8	-1.5	210.1	-0.4	3.3	-2.2