



KMA'S BRIEFING ON CLIMATE CHARACTERISTICS

(total 4 pages)

Division	Meteorological Resources Division
Contact	LEE Jae-Won
Phone/email	+82-2-2181-0882/ jlee99@korea.kr
Release	May 11, 2011

Monthly (April 2011) Climate Summary

- ◇ Temperatures for April 2011 was below-normal but precipitation anomalies was above-normal.
- ◇ The average monthly days of rain for April 2011 was above-normal.

□ Climate features in April 2011 and their long-term trends are analyzed using 47 meteorological stations over Korea (the national average) during 1973-2011 (1908-2011 for Seoul).

□ **The climatological features in April 2011 can be described as follows:**

o Korea (whole nation)

- The mean temperature (11.3 °C), the mean maximum temperature (17.4 °C), the mean minimum temperature(5.4 °C) were 1.0 °C and 1.2 °C and 0.8 °C below normal, respectively
- The monthly amount of precipitation (110.5 mm) was 137% of normal.
- The average monthly days of rain (10.3 days) had more than 7.9 days of normal.
- The average monthly sunshine duration (214.6 hours) was 101% of normal
- The average monthly days of asian dust (0.3 day) was less than 2.3 days of normal.

o Seoul

- The mean temperature (10.7 °C), the mean maximum temperature (15.6 °C), the mean minimum temperature(6.8 °C) were 1.8 °C and 2.2 °C and 1.0 °C below normal, respectively
- The monthly amount of precipitation (110.1 mm) was 171% of normal.
- The number of rainy days (9.0 days) was less than 7.8 days of normal.
- The amount of sunshine duration (202.1 hours) was 99% of normal.
- The number of asian dust days (0 day) was less than 3.3 days of normal.

□ Long-term trend of April climate

- o National mean, mean maximum, and mean minimum temperatures of April 2000s (2001-2010) were 0.5°C, 1.0°C, and 0.3°C higher than those of the 1970s, respectively.
- o The amount of precipitation, the amount of sunshine duration and the number of rainy days both for Korea and for Seoul during 2000s decreased than those of the 1970s.

※ Normal: average from 1981 to 2010.

※ National average is used average values of 47 meteorological stations starting from 1973.

※ In Seoul, data are analyzed from 1908.

※ 1920s: average from 1921 to 1930

※ 1970s: average from 1973 to 1980

※ 2000s: average from 2001 to 2010

Appendix. April 2011 climate

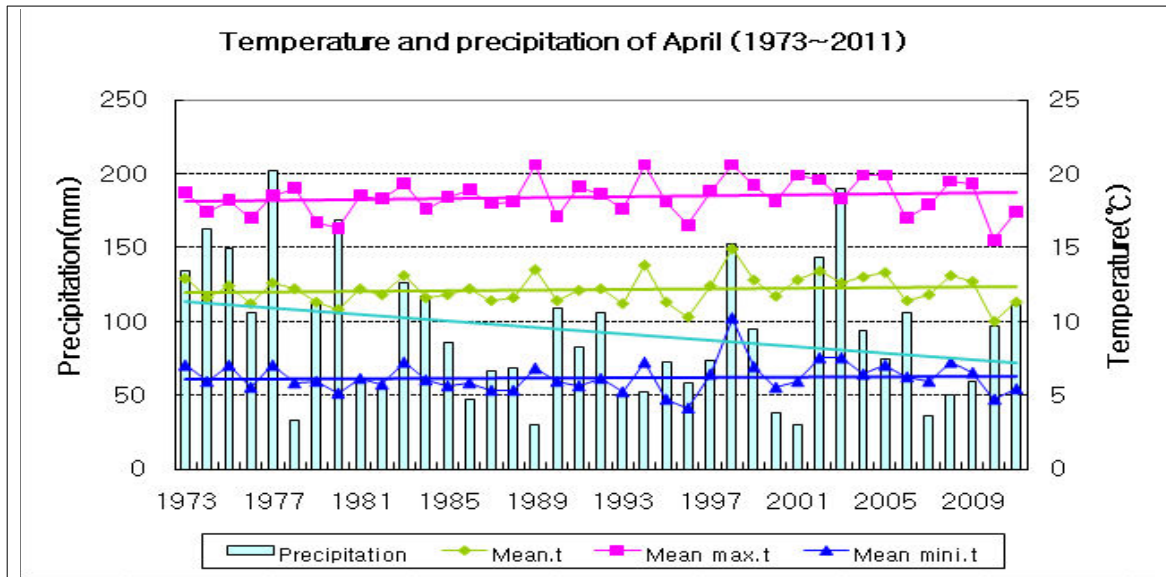


Fig. 1. Temperatures (mean, mean maximum, and mean minimum), and precipitation in South Korea during April 1973-2011.

□ Average values of meteorological elements in Korea during April (1973-2011)

statistics for climate elements (national)	April 2011 (a)	normals of April (1981-2010) (b)	a-b	rank since 1973 (within 5th)
mean temperature (°C)	11.3	12.3	-1.0	
mean maximum t (°C)	17.4	18.6	-1.2	
mean minimum t (°C)	5.4	6.2	-0.8	
amount of precipitation (mm)	110.5	80.7	29.8(137%)	
days of rain	10.3	7.9	2.4	
hours of sunshine (hr)	214.6	211.7	2.9(101%)	
days of asian dust	0.3	2.3	-2.0	

□ Average values of meteorological elements in Korea during April for each decade (1973-2010)

year	mean temp (°C)	mean maximum temp. (°C)	mean minimum temp. (°C)	amount of rain (mm)	days of rain	hours of sunshine (hr)	days of asian dust
1973-1980 (a)	11.9	17.7	6.2	133.2	9.2	207.9	1.5
1981-1990 (b)	12.1	18.5	6.0	76.4	8.2	217.7	1.4
1991-2000 (c)	12.3	18.7	6.2	77.9	7.5	215.4	2.9
2001-2010 (d)	12.4	18.7	6.5	87.9	8.1	202.0	2.8
d-a	0.5	1.0	0.3	-45.3	-1.1	-5.9	1.3
d-b	0.3	0.2	0.5	11.5	-0.1	-15.7	1.4
d-c	0.1	0.0	0.3	10.0	0.6	-13.4	-0.1

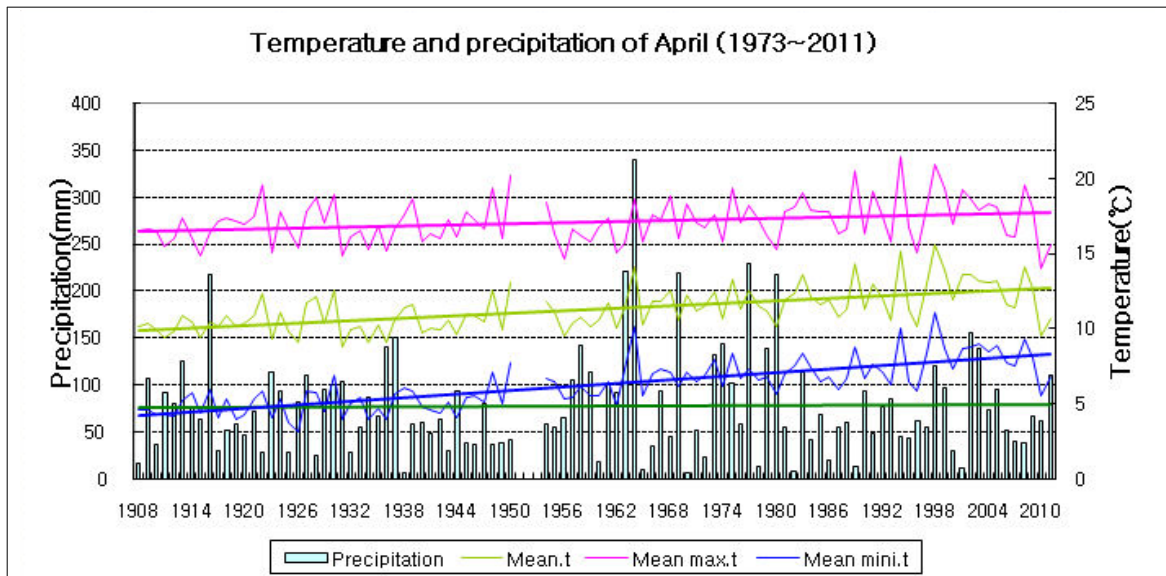


Fig. 2. Temperatures (mean, mean maximum, and mean minimum), and precipitation in Seoul during April 1908-2011

□ Average values of meteorological elements in Seoul during April (1908-2011)

statistics for climate elements (Seoul)	April 2011 (a)	normals of April (1981-2010) (b)	a-b	rank since 1908 (within 5th)
mean temperature (°C)	10.7	12.5	-1.8	
mean maximum t (°C)	15.6	17.8	-2.2	
mean minimum t (°C)	6.8	7.8	-1.0	
amount of precipitation (mm)	110.1	64.5	45.6(171%)	
days of rain	9	7.8	1.2	
hours of sunshine (hr)	202.1	205	-2.9(99%)	
days of asian dust	0	3.3	-3.3	

□ Meteorological elements in Seoul during April for each decade (1911-2010)

year	mean temp. (°C)	mean maximum temp. (°C)	mean minimum temp. (°C)	amount of rain (mm)	days of rain	hours of sunshine (hr)	days of asian dust
1911-1920	10.2	16.5	4.8	84.6	9.7	232.1	-
1921-1930	10.9	17.4	5.1	74.9	7.5	227.8	-
1931-1940 (a)	10.1	16.3	5.0	76.1	7.6	226.2	-
1941-1950	10.8	17.3	5.4	50.9	7.2	244.2	-
1954-1960	10.6	16.4	5.9	80.3	8.9	207.3	-
1961-1970	11.7	17.1	6.9	116.5	9.2	196.9	-
1971-1980 (b)	11.6	17.0	6.9	111.2	9.1	196.1	1.4
1981-1990	12.1	17.8	7.2	53.2	7.2	222.8	1.6
1991-2000	12.7	18.1	7.9	66.6	7.8	213.1	4.5
2001-2010 (c)	12.6	17.6	8.2	73.7	8.5	179.3	3.9
c-a	2.5	1.3	3.2	-2.4	0.9	-46.9	-
c-b	1.0	0.6	1.3	-37.5	-0.6	-16.8	2.5